

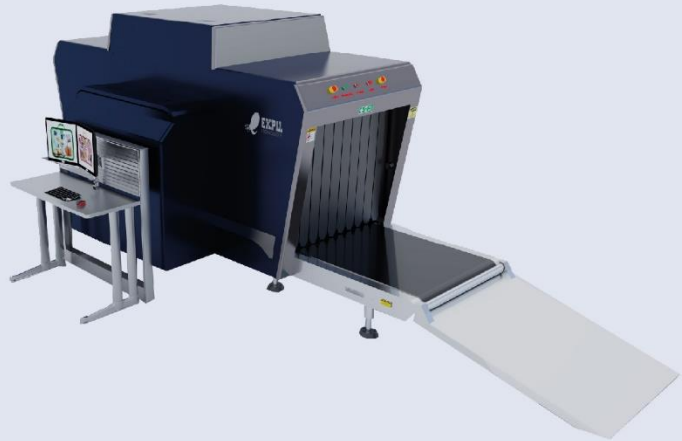


ET-SCAN 1000800

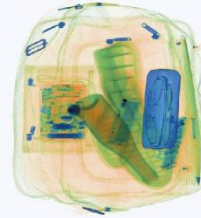
X-Ray Inspection Systems ET-SCAN 1000800

is an advanced dual-energy X-ray inspection of hand luggage and baggage.

With tunnel dimensions of 1000mm x 800mm (W x H), it is ideal for screening hand luggage and baggage at airports, railway stations, customs posts, ports, etc. Along with unmatched ergonomics, reliability and safety, X-Ray Inspection Systems ETSCAN 1000800 provide excellent image quality and improved material classification. ET-SCAN 1000800 inspection machine has the function of automatic detection of explosives and drugs.



Automatic detection of explosives /drugs and alerts



Improved classification of materials: orange – organic, blue – metals, green – mixed materials

Technological features:

- High image quality with 40 AWG wire resolution and 34mm steel penetration
- The X-ray dose rate around the equipment is close to the natural background level, which corresponds to all applicable international health standards and occupational safety
- Automatic detection of explosives /drugs
- TIP (projection of the image of dangerous objects) is a very effective way to train operators and control their work
- Functional stepwise, continuous and local scaling provides convenient and quick magnification of the received image
- Received images can be saved in common formats (BMP, JPG, PNG) and transfer to an external USB drive
- The ergonomic design of the keyboard and user interface ensures effective and professional work of X-ray system
- The modular design, combined with built-in diagnostics, ensures efficient maintenance of the equipment
- Data transmission over a local network using TCP / IP protocols
- Information exchange with the system of technical monitoring results collection and control using a unified data transfer protocol and XML-based metadata format.

- Dual monitors
- Secure access key
- Multilingual operation
- Automatic built in test and self-diagnostics
- Uninterruptible power supply (UPS) for computer
- Threat alert and material classification
- Energy saving design
- One key turn off
- Drugs and explosives detection
- Baggage counter
- Time and date stamp
- Sens-Tech detection board and Hamamatsu detector

Technical parameters and complete set of goods are subject to change without notice.



Transport



Production



Sports



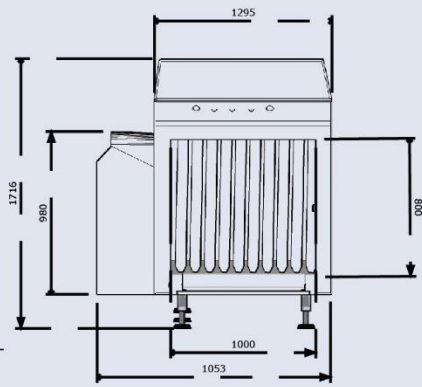
Education



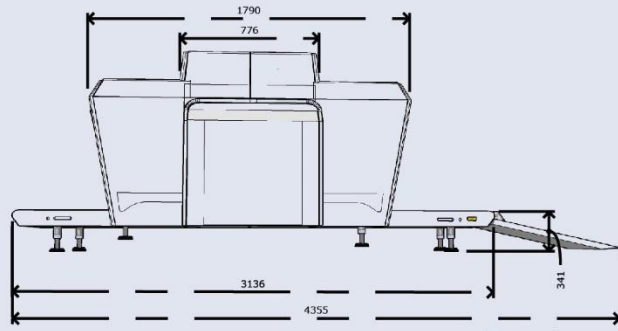
Government



Administrative



Dimension Unit(mm)
Side: Front & Right



Equipment drawing

PHYSICAL SPECIFICATIONS		GENERAL SPECIFICATIONS	
Tunnel Size (LxH)	1000 x 800 (mm) / 39.4" x 31.5" (in.)	Conveyor Speed	0.22 m/s (0.72 ft/s)
Unit Weight	800 kg/ 1763.7 lbs	Conveyor Height	341 (mm)/ 13.4" (in.)
Unit Size (LxWxH)	3130 x 1295 x 1716 (mm)/ 123.2" x 51" x 67.6" (in.)	Conveyor Capacity	200 kg/440.9 lbs
Gross Weight	1000kg/2204.6 lbs (Packet on wooden pallet)	X-ray Dose/Inspection	≤4μSv
Packing Size	#1 :242 x 143 x 198 (cm) / 95.3" x 56.3" x 77.9" (in.) #2 :122 x 90 x 141 (cm) / 48" x 35.4" x 55.5" (in.)	X-ray Leakage	≤1μSv/h at any point 5 centimeters outside the external surface
X-RAY GENERATOR (SINGLE)		Penetration	34mm /1.33" in. steel
Anode Voltage	140-160 KV Adjustable	Wire Resolution	Dia. 0.102mm copper wire (AWG38)
Ray Direction	Downward	Penetration Resolution	Dia. 0.202mm copper wire (AWG32) under three-step aluminum wedge 9.5mm, 15.9mm, 22.2mm
Cooling / Duty Cycle	Oil Cooling /100%	Spatial resolution:	Horizontal: dia. 1.3mm, Vertical: dia. 1.3mm
IMAGING SYSTEM		Power Consumption	Max. 1KW
X-ray Sensor	L-Shaped Photodiode Array, 12bit deep	Noise	<60 dB
Image Display	High resolution of 1024 x 1280 pixel; Image Grey Level: 4096	Film Safety	Guarantee ASA/ISO1600 Film
Image Processor	24bit real time processing ,4colors analysis, Images displayed marked date and ID No., Count the number of bags	OPERATING ENVIRONMENT	
Image Enhancement	1-64times enlargement continuity, Color/BW, negative, high/low penetration enhancement, brightening, darkening, gray level scan, super enhancement, elimination of organic/inorganic materials, local enhancement, pseudo color processing, edge enhancement, etc.	Operation temperature	5°C to 40°C (41°F to 104°F) / 0%-90%(non-condensing)
Image Recall	30 recallable images	Storage Temperature	-40°Cto 70°C (-4°F to 140°F) / 0%-90%(non-condensing)
Explosives & Narcotics Detection	Suspicious organics highlight (atomic number Zeff=7,8,9)	Operation Power	220VAC(±10%) 50±3Hz (Optional: 100VAC,110VAC,120VAC,200VAC)
Alarm	Alarm and box outlines the suspicious objects including hard to penetrate material, explosives and drugs	Stabilizer and UPS	Stabilizer optional. UPS options: 15mins, 30mins, 60mins etc.
Threat Image Projection (TIP)	Insertion of fictional but realistic images of threatening items into baggage during screening operation for training purposes to assess image identification capabilities	COMPUTER AND OTHER	
Image Archive	Up to 50,000 images stored automatically, enable transferring to USB disk, and converting to JPG, BMP and other general formats	Monitor	2x 17" in. LCD monitors, 1280 x 1024, one console desk
Miscellaneous Functions	Time/date display, counters, user management, system-on/ X-ray on timers, power on self test, built-in diagnostic facilities, dual-direction scanning, system log, system standby and simulation training etc.	RAM	4GB
Network Applications (Optional)	Multiple remote applications available based on Ethernet LAN and windows platform, such as image centralized storage and identify, recheck workstation, etc.	Hard Disk	2TB
		Keyboard	Special designed
		System	Windows 10
		Electric Roller	Three-phase
		COMPLIANCE	
		Certificates	ISO19001 ; ISO14001 ; OHSMS18001; CE RoHS FDA FCC