

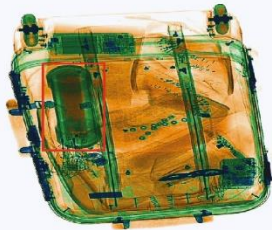
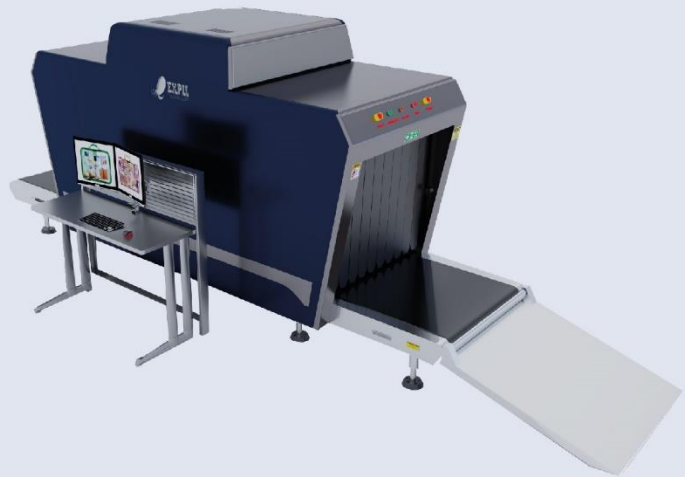


# ET-SCAN 800650

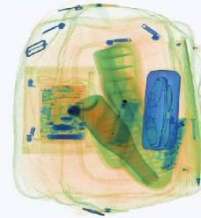
## X-Ray Inspection Systems ET-SCAN 800650

is an advanced dual-energy X-ray inspection system of hand luggage. With tunnel dimensions of 800mm x 650mm (W x H) it is ideal for screening hand luggage in hotels, ships, museums, offices, etc.

Along with unmatched ergonomics, reliability and safety, X-Ray Inspection Systems ETSCAN 800650 provide excellent image quality and improved material classification. X-Ray Inspection Systems ET-SCAN 800650 has the function of automatic detection of explosives and drugs.



Automatic detection of explosives /drugs and alerts



Improved classification of materials: orange – organic, blue – metals, green – mixed materials

### Technological features:

- High image quality with 40 AWG wire resolution and 30mm and 32mm steel penetration
- The X-ray dose rate around the equipment is close to the natural background level, which corresponds to all applicable international health standards and occupational safety
- Automatic detection of explosives /drugs
- TIP (projection of the image of dangerous objects) is a very effective way to train operators and control their work
- Functional stepwise, continuous and local scaling provides convenient and quick magnification of the received image
- Received images can be saved in common formats (BMP, JPG, PNG) and transfer to an external USB drive
- The ergonomic design of the keyboard and user interface ensures effective and professional work of X-ray system
- The modular design, combined with built-in diagnostics, ensures efficient maintenance of the equipment
- Data transmission over a local network using TCP / IP protocols
- Information exchange with the system of technical monitoring results collection and control using a unified data transfer protocol and XML-based metadata format.

- Multilingual operation
- Automatic built-in test and self diagnosis
- Secure access key
- Uninterruptible power supply (UPS) for computer
- Threat alert and material classification
- Auto archiving
- Energy saving design
- One-key turn off
- Drugs and explosives inspection
- Indication of the date and time
- Baggage counter
- Sens-Tech detection board and Hamamatsu detector

Technical parameters and complete set of goods are subject to change without notice.



Transport



Production



Sports



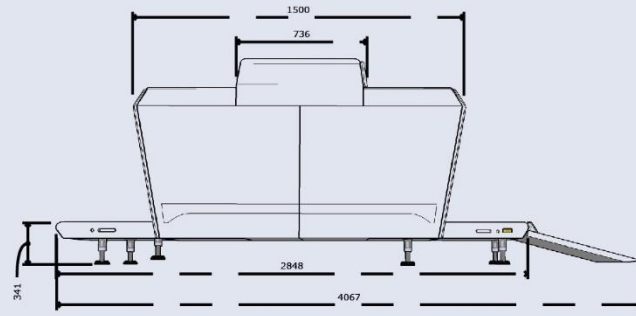
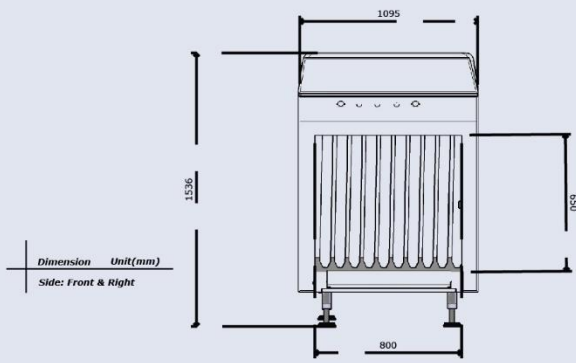
Education



Government



Administrative



**Equipment drawing**

| X-RAY GENERATOR (SINGLE)         |  | GENERAL SPECIFICATIONS    |  |
|----------------------------------|--|---------------------------|--|
| Anode Voltage                    | 160-140 KV adjustable  | Tunnel Size (LxW)         | 800 x 650 (mm)/ 31.5" x 25.6" (in.)  |
| Ray Direction                    | Downward   | Conveyor Speed            | 0.22/0.72 ft/s   |
| Cooling / Duty Cycle             | Oil Cooling /100%  | Conveyor Height           | 341 (mm) /13.4" (in.)  |
| IMAGING SYSTEM                   |  | Conveyor Max Load         | 200 kgs/440.9 lbs  |
| X-ray Sensor                     | L-Shaped photodiode array, 12 bit deep   | X-ray Dose Per Inspection | ≤4μSv  |
| Image Processing                 | 24 bit real time processing ,4colors analysis, Images displayed marked date and ID No., Count the number of bags   | Wire Resolution           | dia. 0.102mm copper wire (AWG38)   |
| Image Display                    | High resolution of 1024 x 1280 pixel; Image Grey Level: 4096   | Spatial Resolution Level  | dia.1.3mm, Vertical: dia. 1.3mm  |
| Image Enhancement                | 1-64 times enlargement continuity, Color/ BW, negative, high/low penetration enhancement, brightening, darkening, gray level scan, super enhancement, elimination of organic/inorganic materials, local enhancement, pseudo color processing, edge enhancement, etc. | Penetration               | 28 mm steel guarantee, 30mm steel typical  |
| Image Recall                     | 30 images recallable   | Penetration Resolution    | dia. 0.202mm copper wire (AWG32) under three-step aluminum wedge 9.5mm, 15.9mm, 22.2mm                 |
| Explosives & Narcotics Detection | Suspicious organics highlight (atomic number Zeff=7,8,9)   | Spatial Resolution        | Horizontal: dia. 1.3mm, Vertical: dia.> 1.3mm  |
| Alarm                            | Alarm will sound with a box outline of the suspicious object(s) including hard to penetrate material, explosives and drugs   | Noise                     | <60 dB   |
| Threat Image Projection (TIP)    | Insertion of fictional but realistic images of threatening items into baggage during screening operation for training purposes to assess image identification capabilities   | Film Safety               | Guarantee ASA/ISO1600 Film   |
| Image Archive                    | Up to 50,000 images stored automatically, enable transferring to USB disk, and converting to JPG, BMP and other general formats  | OPERATING ENVIRONMENT     |  |
| Miscellaneous Functions          | Time/date display, counters, user management, system on/ X-ray on timers, power on self-test, built-in diagnostics, dual-directional scanning, system log, system standby and stimulation training, etc.   | Operating Temperature     | 5°C to 40°C (41°F to 104°F)/0%-90% (non-condensing)  |
| Network Applications (Optional)  | Multiple remote applications available based on Ethernet LAN and windows platform, such as image centralized storage and identify, recheck workstation etc.  | Operating Humidity        | -20°C to 60°C (-4°F to 140°F)/ 10%-90%(non-condensing)   |
| CONTROL SYSTEM                   |  | Operation Power           | 220VAC(±10%) 50±3Hz (Optional: 100VAC,110VAC,120VAC, 200VAC)   |
| Monitor                          | Monitor 2x 17" in. LCD monitors, 1280 x 1024, one console desk   | Power Consumption         | 1.0KW  |
| RAM                              | Three-phase 4GB  | UPS                       | Options: 15mins, 30mins, 60mins etc  |
| Hard Disk                        | 2TB  | Dimensions (LxWxH)        | 2848.5 x 1095 x 1536 (mm)/112.1" x 43.1" x 60.5" (in.)   |
| Keyboard                         | Special design   | Weight                    | 640 kgs/1410.9 lbs   |
| System                           | Windows 10   | Gross Weight              | 800 kgs/1763.7 lbs   |
| Electric Roller                  | Three-phase  | Packing Size              | #1 :212 x 122 x 177 (cm)/83.5" x 48" x 69.7" (in)<br>#2 :122 x 90 x 141 (cm)/48" x 35.4" x 55.5" (in.) |
|                                  |  | COMPLIANCE                |  |
|                                  |  | Certifications            | C  |