



ExPII

EXP-VSSCB-320K

VEHICLE SCANNING SYSTEM (CONVEYOR BELT)



Vehicle Scanning System (Conveyor Belt)

EXP-VSSCB-320K

Overview

The Expll Technologies vehicle security screening system can be designed to screen passenger vehicles (including minibuses), it can quickly detect dangerous goods and contraband hidden in vehicles, such as weapons, explosives, drugs, smuggled goods, etc. It features a track conveyor which moves the car through the scanner. The driver and passengers can wait outside the vehicle to fully protect them from radiation. Equipped with the latest x-ray generator on the top and U-shaped detectors, the scanner provides high penetration, optimized viewing angle and high definition images. This vehicle security screening system is predominantly used at the entrance of parking lots and important government buildings, road traffic checkpoints, customs, border inspection ports, large event venues. The system can be customized to meet customer requirements and conditions of the installation site. It can be integrated with our License Plate Recognition System, real-time video and real-time capture to meet different project requirements.

Features

- **Conveyor:** Advanced track-and-convey design to move the vehicles automatically through the x-ray scanning unit without a driver.
- **Radiation safety:** The driver and passengers exit the vehicle to avoid injury when the vehicle is scanned.
- Downward x-ray and U-shaped detectors design: Brings high penetration and optimized viewing angle, providing high penetration, optimized viewing angle and high definition images.
- High-quality scanning imaging: Track-carrying vehicles ensure that the vehicle travels at a constant speed through the scanning device, which helps the machine produce high-quality images.
- **High penetration:** EXP-VSSCB-320-K is equipped with a high-energy x-ray generator with a typical 70 mm steel penetration, appropriate for scanning medium-sized passenger vehicles.
- **Dual-energy imaging:** The EXP-VSSCB-320-K can perform automatic substance identification, which can distinguish between organics, inorganic matters and difficult-to-penetrate metal objects. It helps operators quickly identify a variety of dangerous items.
- Automatic License Plate Recognition(ALPR): License plate recognition can be integrated to meet a customer's needs.

Imaging System

- Password protected login.
- Checked vehicle information list, data query, user management, real-time curve, playback, etc.
- Image function: color / black and white, increase, over increase, inverse color, highlight / darken, local enhancement, super enhancement, organic stripping, inorganic stripping, brightening, darkening, zoom in/out (1-64), etc.
- Real-time video; real-time capture (Optional).
- Organic and inorganic matter color image display.
- 30 images pullback
- Up to 500,000 images stored automatically

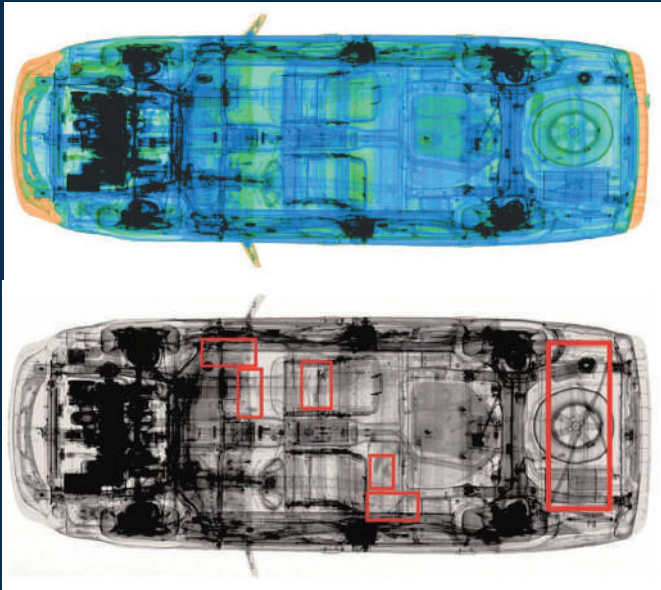


Specifications

PHYSICAL	
Tunnel Size	3 (W) * 3 (H) m (can be customized)
Load Capacity Of Conveyor	4000 kg
Scanning Speed	0.3 m/s
Typical Pass Rate	30 cars / hour
Steel Penetration	Typical 70mm, guarantee 40mm
Wire Resolution	38AWG
Penetration Resolution	32AWG
Spatial Resolution	1.3mm
X Ray Dose Per Inspection	<3μSv
X Ray Leakage	<0.5μSv/h, anywhere 1.5m away from the exit of the system
Noise	<65dB(A) , anywhere 1m away from the system
Detector Shape	High resolution U-shaped detector line
Safety Standard	Meet the requirements of GB2005-15208.0
Power Consumption	Maximum 15KVA
Console	24-inch display
Film Safety	Guarantee ASA/ISO1600 Film
X-RAY GENERATOR (DUAL ENERGY)	
X-ray generator	320KV, sealed oil cooling
Ray direction	Downward
OPERATING ENVIRONMENT	
Operating Temperature	5°C ~ 40°C
Operating Humidity	0% ~ 90% (non-condensing)
Storage Temperature	-23°C~ 60°C
Storage Humidity	10% ~ 90% (non-condensing)
Power supply	380 VAC ± -15% 3phase 50~60Hz 3±Hz

Vehicle Scanning System (Conveyor Belt) EXP-VSSCB-320K

Images



Dimensions

