



ExPII EXP002

DROP-OVER CABLE RAMPS

ExPll EXP002

DROP-OVER CABLE RAMPS



IMPORTANT: OUR PRODUCTS ARE MADE OF PREMIUM RECYCLED RUBBER WITHOUT ANY TOXIC SMELL.



MADE OF POLYURETHANE
Flexible construction that perfectly fits uneven floors.



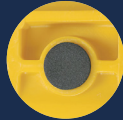
SKIDPROOF SURFACE
Fitted with an anti-slip patterned surface for better grip.



CONVENIENT HANDLE
Easy to carry and to handle.



INTERLOCKING SYSTEM
Improves the strength and the stability, prevents disconnection and makes the installation easier.



ANTI-SLIP PADS
Enhance the traction on smooth surfaces.



CUSTOM-MADE PACKING
Makes the storage and the delivery to your clients easier.

PRODUCTS	TYPES	CHANNELS DIMENSIONS	OVERALL DIMENSIONS
	Small	40 x 14 mm (1.57" x 0.55")	Length: 914 mm (36") Width: 135 mm (5.25") Height: 22 mm (0.87")
	Large	104 x 30 mm (4" x 1.25")	Length: 914 mm (36") Width: 280 mm (11") Height: 40 mm (1.57")