



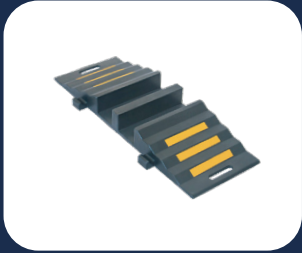
ExPII

EXP003

RUBBER HOSE RAMP

ExPll EXP003

RUBBER HOSE RAMP



CONVENIENT HANDLE

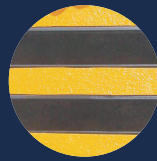


INTERLOCKING SYSTEM



MADE OF POLYURETHANE

IMPORTANT: OUR PRODUCTS ARE MADE OF PREMIUM RECYCLED RUBBER WITHOUT ANY TOXIC SMELL.



EMBEDDED GLASS BEAD REFLECTIVE TAPES

Thick and resistant, several colours available.



CONVENIENT HANDLES

Easy to carry and to install.



INTERLOCKING SYSTEM

Improves the strength and the stability, prevents disconnection and makes the installation easier.



CUSTOM-MADE PACKING

Makes the storage and the delivery to your clients easier.

| TYPE | WEIGHT CAPACITY | MAXIMUM CABLE DIAMETERS | OVERALL DIMENSIONS |
|------------|-----------------------------------|-------------------------|--|
| 2 CHANNELS | 9,000 KG per axle (20,000 lbs) | 70 mm (2.8") | Length: 850mm (33") Width: 300 mm (12") Height: 85 mm (3.3") |