

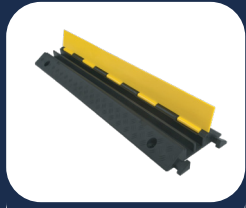
ExPII

EXP004

RUBBER CABLE RAMPS

ExpII EXP004

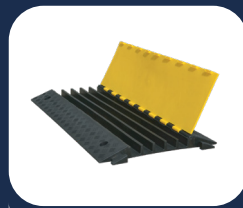
RUBBER CABLE RAMPS



2 CHANNELS



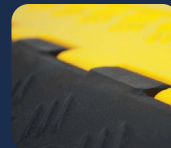
3 CHANNELS



5 CHANNELS



CONVENIENT HANDLE



HEAVY-DUTY HINGES



INTERLOCKING SYSTEM

IMPORTANT: OUR PRODUCTS ARE MADE OF PREMIUM RECYCLED RUBBER WITHOUT ANY TOXIC SMELL.



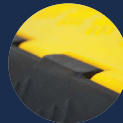
CONVENIENT HANDLE
Easy to carry and to handle.



COMPANY NAME OR LOGO
Can be molded-in for easy identification.



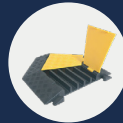
INTERLOCKING SYSTEM
Improves the strength and the stability, prevents disconnection and makes the installation easier.



HEAVY-DUTY HINGES
Ensure a better resistance and durability.



NYLON BAR
Manufactured from virgin nylon for maximum resistance.



45° CORNERS (2, 3 AND 5 CHANNELS)
Suitable for any type of works.

PRODUCTS	TYPES	MAXIMUM CABLES DIAMETERS	OVERALL DIMENSIONS
	2 channels	30 mm (1.2'')	Length: 980 mm (38.5'') Width: 240 mm (9.5'') Height: 45 mm (1.8'')
	3 channels	50 mm (2'')	Length: 900 mm (35.5'') Width: 500 mm (20'') Height: 70 mm (2.75'')
	5 channels	35 mm (1.4'')	Length: 900 mm (35.5'') Width: 500 mm (20'') Height: 50 mm (2'')