



3 Years Warranty



Biometrics



RFID



Barcode



QR Code

EXPLL-RX Parallax

Turnstile for access control with different glass heights.

ExPLL-RX Parallax. The passage width can reach 600mm for normal passage, and it can support 900 mm or 1200 mm arm for wide passage ; wheelchair and pedestrians with large luggage can also pass.

The glass arm can be raised 900mm to 1800mm for high security control. Brushed stainless steel body, sturdy, anti-rust, waterproof and durable. The opening speed is 0.2 seconds.

3-year warranty. Ideal for areas where aesthetics are required; hotels, buildings, libraries, cinemas, gymnasiums, etc.

EXPII-RX Parallax Speed Turnstile

Turnstile for access control with different glass heights.

Features

- ideal for both indoor and outdoor use.
- Single or bi-directional direction can be selected.
- Automatic reset function: the turnstile arm will automatically lock within 5 sec (can be adjusted) if the passenger delay is given to the entrance.
- Integrate with RFID, fingerprint and biometric reading device.
- In case of emergency, the arms will open automatically to allow free passage when power off.

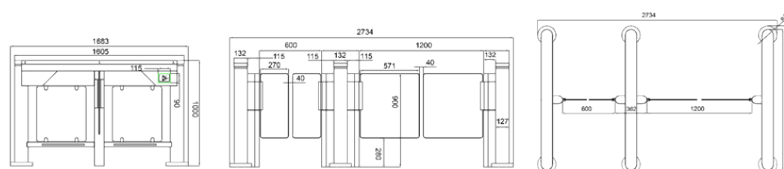


Technical Specifications

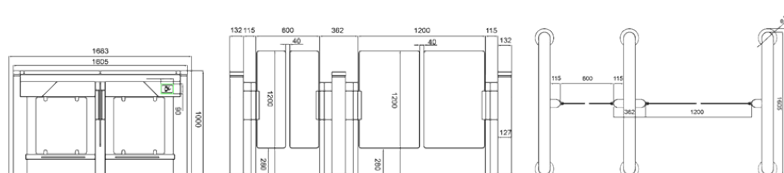
Frame material	304 stainless steel
Arm material	tempered glass
Dimensions and Weight	1605 * 127 * 1000mm / 75kg/pcs
Pitch width	600-1200mm (one step)
Arm height	900-1800mm (max.)
Pitch direction	Monodirectional and bidirectional
MCBF	5 million
Power Supply	AC220V/110V, 50/60Hz
Operating voltage	24V DC
Power consumption	40W
Operating temperature	-15°C - 60°C
Operating humidity	0 ~ 95% (no freezing)
Operating environment	Indoor / Outdoor
Flow rate	50-55 persons per minute
Indicator	Yes
Infrared sensor	16 pairs
Emergency	Automatic arm opening when power is disconnected
Communication	Dry contact, relay signal, RS485

Dimensions (mm)

Short glass arm



Long glass arm



Product specifications are subject to change without notice.