



3Years Warranty

EXPLL-RX Transio

The high quality waterproof Alien Gate (IP65)

Transio is a **bidirectional turnstile** with selector, in case you want to parameterize unidirectionally, for high performance and high reliability access control. Silent and robust with a technology that guarantees an average of **10 million uses** without impact on the **"brushless"** mechanics.

3-year warranty. It has an arm of 850 or 900mm to allow the passage of **wheel chairs** and **pedestrians with luggage**. With automatic reset function (parameterizable) if the user is delayed more than 5 seconds, LED indicator of entry and closing and easy installation and maintenance.

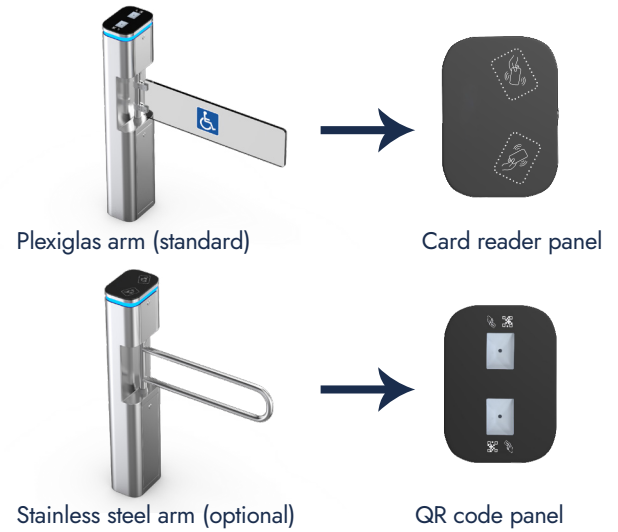
It is ideal for areas with pedestrian traffic: parks, schools, factories, libraries, cinemas, gyms, etc.

EXPII-RX Transio

The high quality waterproof Alien Gate (IP65)

Features

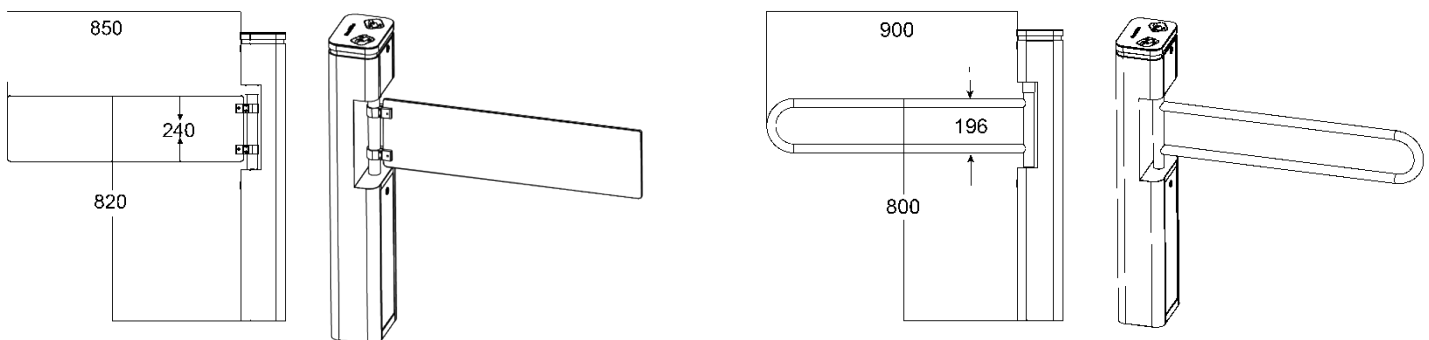
- The top cover is made of black tempered glass.
- The 230 wide cabinet is flexible to install RFID card reader.
- 900 mm arm for wide passage, wheelchair, and pedestrians with large luggage can also pass.
- Decorative LED light bar, gives aesthetics and distinction.
- Automatic reset function: the turnstile arm will automatically lock within 5 sec. (can be adjusted) if passenger delay at the entrance.



Technical Specifications

Certi cation	Compliance CE, ROHS
Communication	Dry contact, Relay signal, RS485
Material	304 brushed stainless steel+ high-end black tempered glass
Arm material	304 Stainless Steel or Plexiglas-transparency
Dimension and Net Weight	230 * 165 * 1050mm / 25kg/pcs
Passage/arm Width	≤900mm/Stainless steel arm length: 900mm; Plexiglas-transparency arm length: 850mm
Passing Direction	Single directional and Bi-directional
MCBF	10 million
Power Supply	AC220V/110V, 50/60Hz
Operation Voltage / Power	24V DC / 20W
Operation Temperature	-20°C - 75°C
Operation Humidity	0 ~ 95% (No freeze)
Working Environment	Indoor / Outdoor Waterproof
Flow Rate	35~40 people per minute
LED Indicator	Unique blue LED strip
Emergency	Arms will open automatically
Flexibility	Integrate with any access control

Dimensions (mm)



Product specifications are subject to change without notice. EXPII-RX.