

# ETSCAN-10080P



**BORDER CROSSINGS  
AND TRANSPORTATION  
FACILITIES**



**SECURITY CHECKPOINTS  
AND CORRECTIONAL  
FACILITIES**



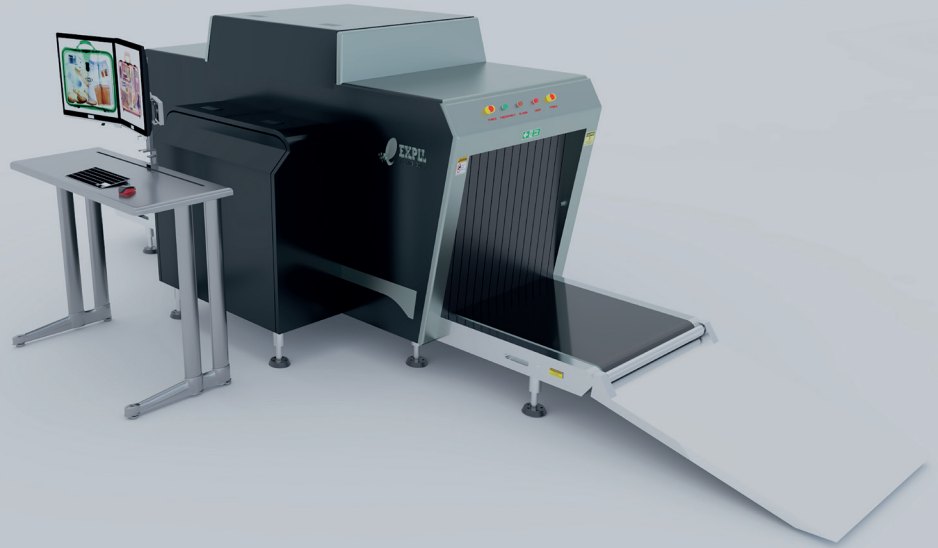
**GOVERNMENTAL  
BUILDINGS AND  
COURTHOUSES**



**BANKS AND  
HOTEL COMPLEXES**



**CRUISE SHIPS AND  
CRITICAL  
INFRASTRUCTURE**



## OVERSIZED BAGGAGE AND PACKAGES X-RAY SCANNER

**ETSCAN-10080P** is an advanced dual-energy X-ray inspection system for hand luggage inspection. With tunnel dimensions of 1000 x 800 (mm) / 39.4" x 31.5" (in.) it is ideal for screening hand luggage and baggage at airports, railway stations, customs posts, ports, etc.

Along with unmatched ergonomics, reliability and safety, X-ray inspection machines **ETSCAN-10080P** provide excellent image quality and improved material classification.

**ETSCAN-10080P** inspection machine has the function of automatic detection of explosives and drugs.

## FEATURES

- Dual monitors
- Secure access key
- Multilingual operation
- Automatic built in test and self-diagnostics
- Uninterruptible power supply (UPS) for computer
- Threat alert and material classification
- Energy saving design
- One key turn off
- Drugs and explosives detection
- Baggage counter
- Time and date stamp
- Sens-Tech detection board and Hamamatsu detector

## OPTIONS

### COMPUTER AND OTHER

Monitor	2x 17" in. LCD monitors, 1280 x 1024, one console desk
RAM	4GB
Hard Disk	2TB
Keyboard	Special designed
System	Windows® 10
Electric roller	Three-phase



# ETSCAN-10080P



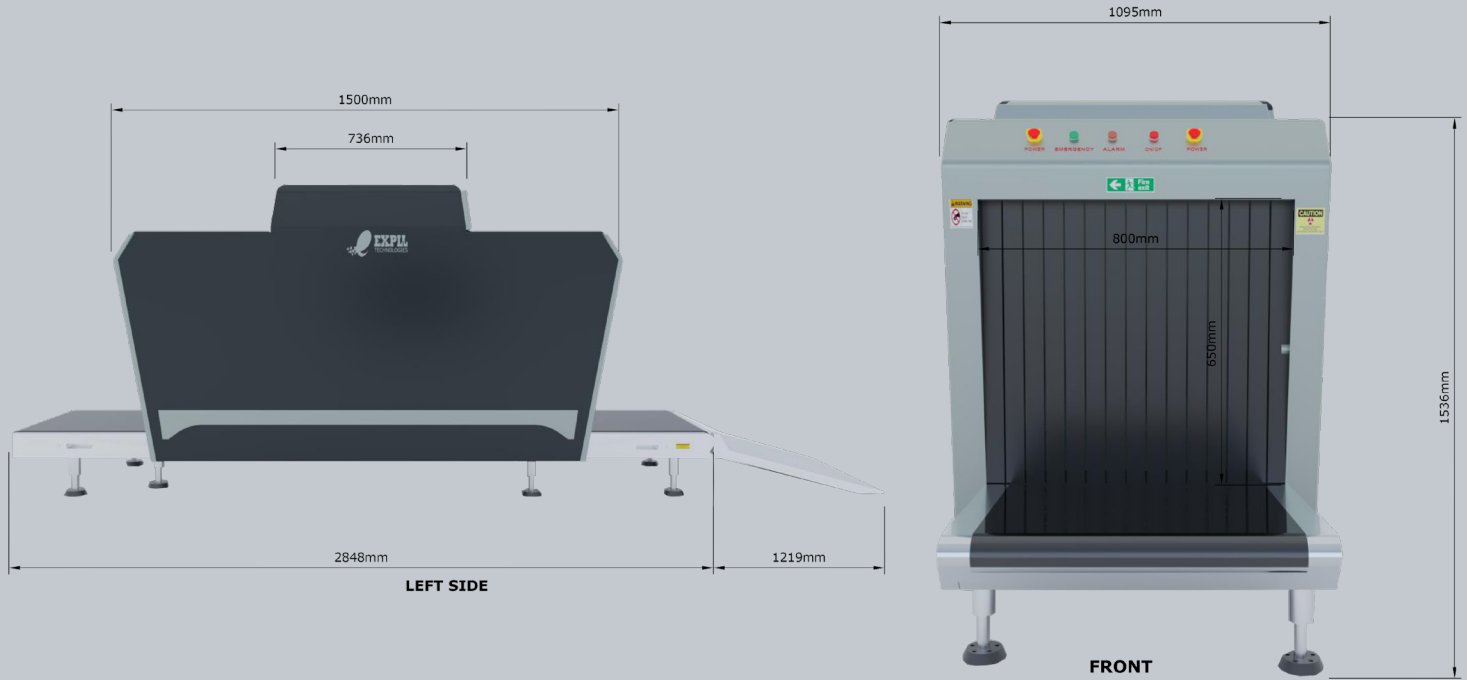
## TECHNICAL SPECIFICATIONS

PHYSICAL SPECIFICATIONS		IMAGING SYSTEM	
Tunnel Size (LxH)	1000 x 800 (mm) / 39.4" x 31.5" (in.)	X-ray Sensor	L-Shaped photodiode array, 12 bit deep
Unit Weight	800 kg/ 1763.7 lbs	Images Process	24 bit real time processing ,4colors analysis, Images displayed marked date and ID No., Count the number of bags
Unit Size (LxWxH)	3130 x 1295 x 1716 (mm)/ 123.2" x 51" x 67.6" (in.)		
Gross Weight	1000kg/2204.6 lbs (Packet on wooden pallet)	Image Display	High resolution of 1024 x 1280 pixel; Image Grey Level: 4096
Packing Size	#1: 242 x 143 x 198 (cm) / 95.3" x 56.3" x 77.9" (in.)	Image Enhancement	1-64times enlargement continuity, Color/BW, negative, high/low penetration enhancement, brightening, darkening, gray level scan, super enhancement, elimination of organic/inorganic materials, local enhancement, pseudo color processing, edge enhancement, etc.
	#2: 122 x 90 x 141 (cm) / 48" x 35.4" x 55.5" (in.)		
GENERAL SPECIFICATIONS		Image Recall	30 images recallable
Conveyor Speed	0.22 m/s (0.72 ft/s)	Explosives & Narcotics Detection	Suspicious organics highlight(atomic number Zeff=7,8,9)
Conveyor Height	341 (mm)/ 13.4" (in.)	Alarm	Alarm will sound with a box outline of the suspicious object(s) including hard to penetrate material, explosives and drugs
Conveyor Capacity	200 kg/440.9 lbs		
X-ray Dose/Inspection	≤4μSv	Threat Image Projection (TIP)	Insertion of fictional but realistic images of threatening items into baggage during screening operation for training purposes to assess image identification capabilities
X-ray Leakage	≤1μSv/h at any point 5 centimeters outside the external surface	Image Archive	Up to 50,000 images stored automatically, enable transferring to USB disk, and converting to JPG, BMP and other general formats
Penetration	34mm /1.33" in. steel		
Wire Resolution	Dia. 0.102mm copper wire (AWG38)	Miscellaneous Functions	Time/date display, counters, user management, system on/ X-ray on timers, power on self-test, built-in diagnostics, dual-directional scanning, system log, system standby and stimulation training, etc.
Penetration Resolution	Dia. 0.202mm copper wire (AWG32) under three-step aluminum wedge 9.5mm, 15.9mm, 22.2mm		
Spatial resolution	Horizontal: dia. 1.3mm, Vertical: dia. 1.3mm	Network Applications	(Optional) Multiple remote applications available based on Ethernet LAN and windows platform, such as image centralized storage and identify, recheck workstation etc.
Power Consumption	Max. 1KW		
Power Current	Max. 5mA		
Noise	<60 dB		
Film Safety	Guarantee ASA/ISO1600 Film		
X-RAY GENERATOR:			
Anode Voltage	140-160 KV Adjustable		
Ray Direction	Downward		
Cooling / Duty Cycle	Oil Cooling /100%		
OPERATING ENVIRONMENT			
Operation Temperature/ Humidity	5°C to 40°C (41°F to 104°F)/0%-90% (non-condensing)		
Storage Temperature/ Humidity	-20°C to 60°C (-4°F to 140°F)/ 10%-90%(non-condensing)		
Operation Power	220VAC(±10%) 50±3Hz (Optional: 100VAC,110VAC, 120VAC,200VAC)		
Stabilizer and UPS	Stabilizer optional. UPS options: 15mins, 30mins, 60mins etc.		
COMPLIANCE			
International	* ISO19001; ISO14001; OHSMS18001; * CE RoHS * FDA FCC		

# ETSCAN-10080P



## DIMENSIONS



## OPTIONS



DUAL MONITOR OPERATOR STAND



AIRPORT SECURITY SCANNER CONVEYOR TRAYS

### CONTACTS



30 N Gould St Ste 29263 Sheridan,  
WY 82801 USA  
+1 (253) 340-5865  
info@expii.com  
www.expii.com