

ETSCAN-150180



**BORDER CROSSINGS
AND TRANSPORTATION
FACILITIES**



**SECURITY CHECKPOINTS
AND CORRECTIONAL
FACILITIES**



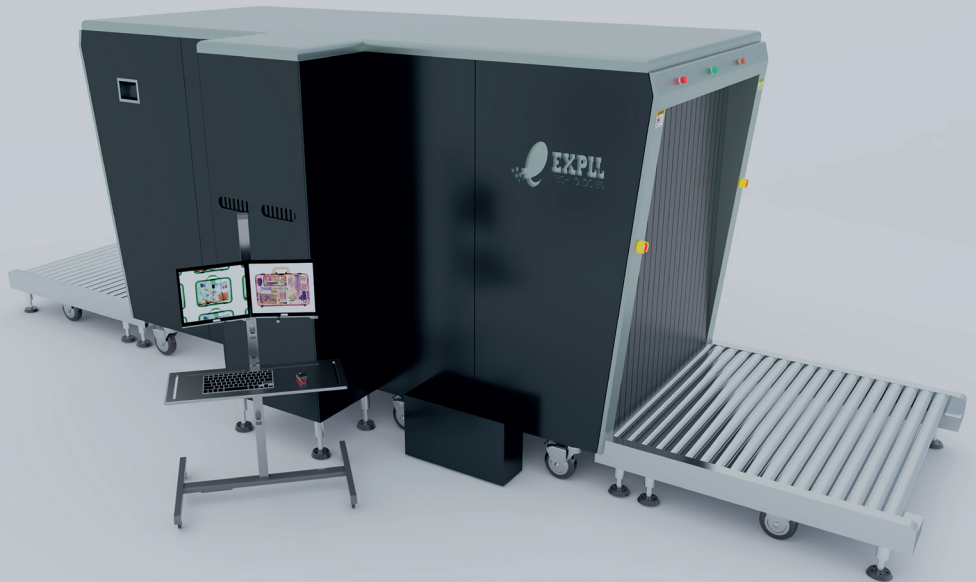
**GOVERNMENTAL
BUILDINGS AND
COURTHOUSES**



**BANKS AND
HOTEL COMPLEXES**



**CRUISE SHIPS AND
CRITICAL
INFRASTRUCTURE**



LOWER DECK CARGO SCREENING X-RAY SCANNER

Lower-Deck Cargo Scanner **ETSCAN-150180** is an advanced dual-energy X-ray inspection system for cargo.

With tunnel dimensions of 1500 x 1800 (mm) / 59" x 70.9" (in.) it is ideal for cargo inspection at airports, railway stations, customs posts, ports, etc.

Along with unmatched ergonomics, reliability and safety, X-ray inspection machines **ETSCAN-150180** provide excellent image quality and improved material classification.

X-ray inspection system **ETSCAN-150180** has the function of automatic detection of explosives and drugs.

FEATURES

- Multilingual operation
- Automatic built in test and self diagnosis
- Secure access key
- Uninterrupted power supply (UPS)
- Threat alert and material classification
- Auto archiving
- Network ready
- Energy saving design
- One key turn off
- Drugs and explosives inspection
- Indication of the date and time
- Baggage counter

OPTIONS

COMPUTER AND OTHER

Monitor	High Resolution Color, LCD Accord, 17inch
Hard Disk	up to 500GB
CPU	Included
Storage	up to 2GB



TECHNICAL SPECIFICATIONS

PHYSICAL SPECIFICATIONS		IMAGING SYSTEM	
Tunnel Size (LxH)	1500 x 1800 (mm) / 59" x 70.9" (in.)	X-ray Sensor	L-Shaped Photo diode Array (multi-energetic) , 16bit Deep
Unit Weight	1150 kg / 2535.3 lbs	Image Display	High resolution of 1024 x 1280 pixel; Image Grey Level: 4096
Unit Size (LxWxH)	2127 x 2230 x 2338 (mm) / 83.7" x 91.7" x 92" (in.)	Image Enhancement	1-64times enlargement continuity, Color/BW, negative, high/low penetration, organic /inorganic Stripping, general enhancement, and pseudo color, etc.
Gross Weight	1350 kg / 2976.2 lbs	Image Recall	All preceding images recallable, retrieval
Packing Size	#1: 463 x 273 x 240 (cm) / 182.3" x 107.5" x 94.5" (in.) #2: 176 x 171 x 53 (cm) / 69.3" x 167.3" x 37.2" (in.)	Explosives and Narcotic Detection	Explosives & narcotics alarm and highlight according to atomic number signature
GENERAL SPECIFICATIONS		High Density Region Alarm	Impenetrable region alarm and highlight, for possible concealing of threats and contrabands
Conveyor Speed	0.2 m/s forward and reverse	Threat Image Projection	Inserting fictional, but realistic images of threat items into baggage during screening operation, for maintenance of vigilance, as well as training and assessment of image identification capability
Conveyor Height	350 mm	Image Archive	Up to 200,000 images stored automatically, enable transferring to USB disk, and converting to JPG, BMP and other general formats
Conveyor Capacity	2000 kg/4409 lbs	Miscellaneous Functions	Time/date display, counters, user management, system-on/X-ray-on timers, power on self test, built-in diagnostic facilities, dual-direction scanning, system log, system standby and stimulant training, ADS etc.
X-ray Dose/Inspection	Typical 2.5 µGy/h, guarantee 3.0 µGy/h	Network Applications	Multiple remote applications available based on Ethernet LAN and windows platform, such as image centralized storage and identify, recheck workstation, and network TIP, etc (Optional).
X-ray Leakage	Typical 1.5 µGy/h, guarantee 2.0 µGy/h	Image Process	24bit real time processing ,4colors analysis, Images displayed marked date and ID NO ,Count the number of bags
Penetration	Typical 34mm, guarantee 32mm		
Wire Resolution	Dia. 0.127mm copper wire (AWG36)		
Penetration Resolution	Typical AWG32, guarantee AWG30		
Spatial resolution	Typical Ø 1.3mm, Vertical: Ø 1.3mm; Guarantee Ø 1.6mm, Vertical: Ø 1.6mm		
Power Consumption	Max. 2.0KW		
Noise	<60 dB		
Film Safety	Guarantee ASA/ISO1600 Film		
X-RAY GENERATOR:			
Anode Voltage	140-160 KV Adjustable		
Ray Direction	Downward		
Cooling / Duty Cycle	Oil Cooling /100%		
OPERATING ENVIRONMENT			
Operation Temperature/ Humidity	0°C-45°C / 5%-95%(non-condensing)		
Storage Temperature/ Humidity	-40°C to 70°C/ 5%-95%(non-condensing)		
Operation Power	220VAC(±10%) 50±3Hz (Optional: 100VAC,110VAC, 120VAC, 200VAC)		
COMPLIANCE			
International	ISO19001; ISO14001; OHSMS18001; CE		

ETSCAN-150180



DIMENSIONS



OPTIONS



DUAL MONITOR OPERATOR STAND



AIRPORT SECURITY SCANNER CONVEYOR TRAYS

CONTACTS



30 N Gould St Ste 29263 Sheridan,
WY 82801 USA
+1 (253) 340-5865
info@expll.com
www.expll.com