

# ETSCAN-5030



**BORDER CROSSINGS  
AND TRANSPORTATION  
FACILITIES**



**SECURITY CHECKPOINTS  
AND CORRECTIONAL  
FACILITIES**



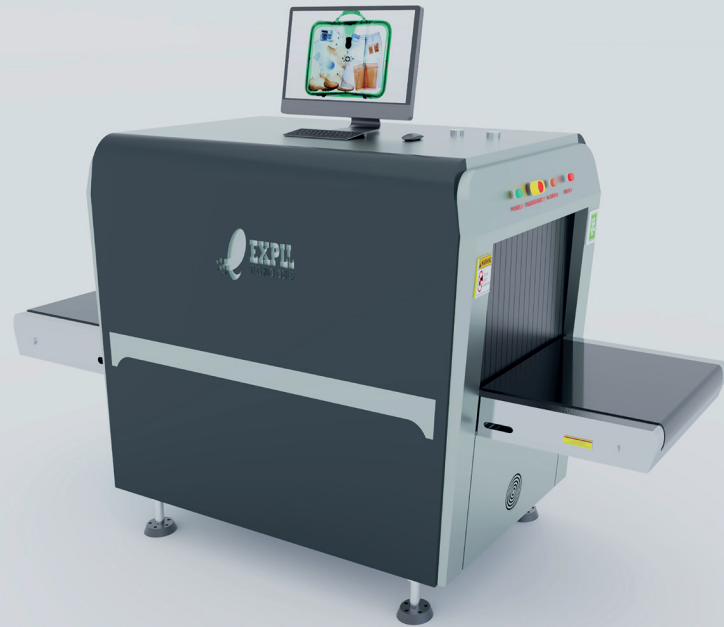
**GOVERNMENTAL  
BUILDINGS AND  
COURTHOUSES**



**BANKS AND  
HOTEL COMPLEXES**



**CRUISE SHIPS AND  
CRITICAL  
INFRASTRUCTURE**



## MAIL ROOM X-RAY SCANNER MACHINE

**ETSCAN-5030** is an Mail screening of hand luggage. With tunnel dimensions of 503 x 295.5 (mm)/16.5' x 9.7' (ft) it is ideal for screening hand luggage in hotels, ships, museums, offices, etc.

Along with unmatched ergonomics, reliability and safety X-ray inspection machines **ETSCAN-5030** provide excellent image quality and improved material classification.

X-ray inspection machine **ETSCAN-5030** has the function of automatic detection of explosives and drugs

## KEY FEATURES

- Multilingual operation
- Automatic built-in test and self-diagnosis
- Secure access Key
- Threat alert and material classification
- Auto archiving
- One key turn off
- Drugs and explosives inspection
- Indication of the date and time
- Baggage counter
- Detect PCB board
- USA Sensortech Extension Rollers, customize size length
- Support card reader operator access
- CD DVR/RW unit: Optional Computer system: XP system UPS: 15mins, 30mins, 60mins etc,
- Windows 10, Dual energy, Sens-Tech data processor w/Hamamatsu detector
- Options: Extension rollers, intelligent roller, UPS, Spellman generator, etc.
- No console available
- Uninterruptible power supply (UPS)
- Energy Saving Design

## OPTIONS

### COMPUTER AND OTHER

Monitor	High Resolution Color, 1280 x 1024 LCD 17" inch
RAM	4GB
Hard Disk	2TB
Keyboard	Special designed + Normal keyboard
System	Windows 10
Electric	Roller Single-phase
UPS	Options: 15mins, 30mins, 60mins etc



## TECHNICAL SPECIFICATIONS

PHYSICAL SPECIFICATIONS		IMAGING SYSTEM	
Unit Weight	300 kg/661.4 lbs	X-ray Sensor	L-Shaped Photo diode Array, 12bit deep
Unit Size (LxWxH)	1660 x 746 x 1165 (mm)/65.4" x 29.4" x 45.9" (in)		
Gross Weight	400 kg / 881.8 lbs	Image Processor	24bit real time processing, 4 color analysis, Images displayed stamped with date and ID number, baggage counter
Packing Size	179 x 87 x 137 (cm)/70.5" x34.3" x 53.9" (in)		
GENERAL SPECIFICATIONS		Image Display	High resolution of 1024x1280 pixel; Image Grey Level: 4096
Tunnel Size (LxW)	503 x 295.5 (mm)/16.5' x 9.7' (ft)		
Conveyor Speed	0.22 m/s	Image Enhancement	1-64times enlargement continuity, Color/BW, negative, high/ low penetration enhancement, brightening, darkening, gray level scan, super enhancement, elimination of organics/inorganic, local enhancement, pseudo color processing, edge enhancement, etc.
Conveyor Height	663.5 mm / 26.1" (in)		
Conveyor Max Load	100 kgs /		
X-ray Dose Per Each Inspection	≤2.5μGy		
X-ray Leakage	≤1μSv/h at any point 5 centimeters outside the external surface		
Penetration	32mm steel		
Wire Resolution	dia 0.0787mm copper wire (AWG40)		
Penetration Resolution	dia 0.202mm copper wire (AWG32) under three-step aluminum wedge 9.5mm, 15.9mm, 22.2mm		
Spatial resolution:	Horizontal: dia 1.0mm, Vertical: dia 1.0mm		
Power Consumption	Max. 500W		
Noise	<60 dB	Explosives & Narcotics Detection	Suspect organics highlight (atomic number Zeff=7,8,9)
Film Safety	Guarantee ASA/ISO1600 Film		
X-RAY GENERATOR (SINGLE)		Suspect Alarm	Audible alarm and box will outline the suspicious object(s) on the screen to include hard to penetrate materials, explosives and drugs
Anode Voltage	140 KV		
Ray Direction	Upward		
Cooling / Duty Cycle	Sealed oil cooling /100%	Threat Image Projection (TIP)	Insertion of fictional but realistic images of threatening items into baggage during screening operation for training purposes to assess image identification capabilities
OPERATING ENVIRONMENT			
Operation Temperature/ Humidity	5°C to 40°C/0% to 90%(non-condensing)		
Storage Temperature/ Humidity	-20°C to 60°C/10% to 90%(non-condensing)	Image Recall	30 recallable images
Operation Power	220VAC(±10%) 50±3Hz (Optional: 100VAC,110VAC,120VAC,200VAC)		
		Image Archive	Up to 100,000 images stored automatically, can be transferred to a USB disk, and converted to JPG, BMP and other general formats
COMPLIANCE			
International	<ul style="list-style-type: none"> <li>· ISO19001; ISO14001;</li> <li>OHSMS18001;</li> <li>· CE RoHS</li> <li>· FDA FCC</li> </ul>	Miscellaneous Functions	Time/date display, counters, user management, systemon/ X-ray-on timers, power on self test, built-in diagnostic facilities, system log, system standby and simulated real-world training, etc.

# ETSCAN-5030



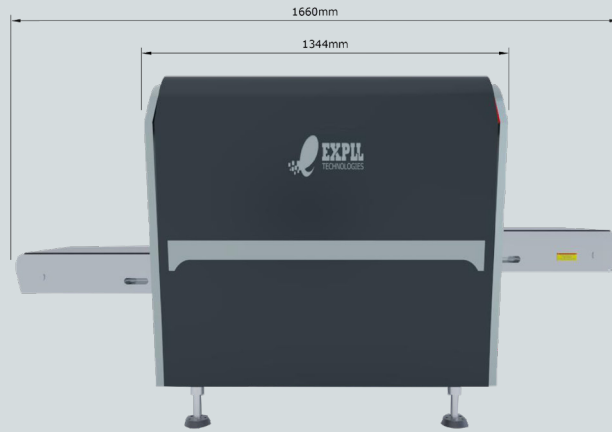
## MODELS AVAILABLE

MODEL	STEEL PENETRATION	X-Ray Generator
ETSCAN-5030	32mm	140kv
ETSCAN-5030P	38mm	160kv

## DIMENSIONS



FRONT



LEFT SIDE

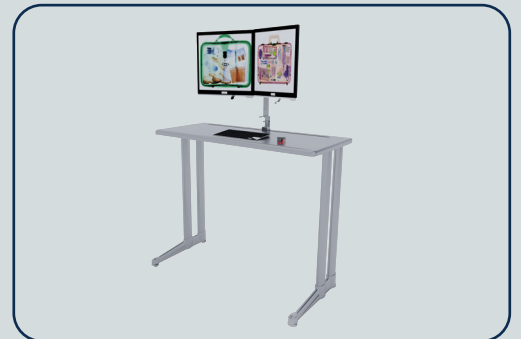
## OPTIONS



DUAL MONITOR OPERATOR STAND



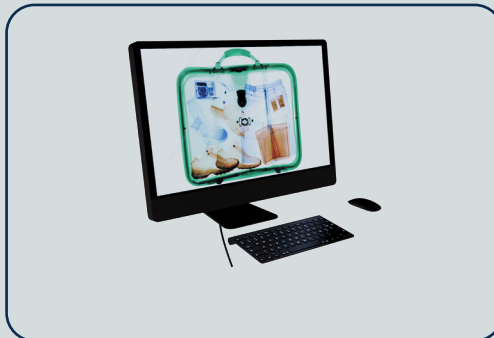
AIRPORT SECURITY SCANNER CONVEYOR TRAYS



SINGEL MONITOR OPERATOR



OPERATOR DESK



TOUCH SCREEN OPERATOR STATION



ROLLER TABLES IN DIFFERENT LENGTHS

### CONTACTS



30 N Gould St Ste 29263 Sheridan,  
WY 82801 USA  
+1 (253) 340-5865  
info@expll.com  
www.expll.com