

# ETSCAN-6040



**BORDER CROSSINGS  
AND TRANSPORTATION  
FACILITIES**



**SECURITY CHECKPOINTS  
AND CORRECTIONAL  
FACILITIES**



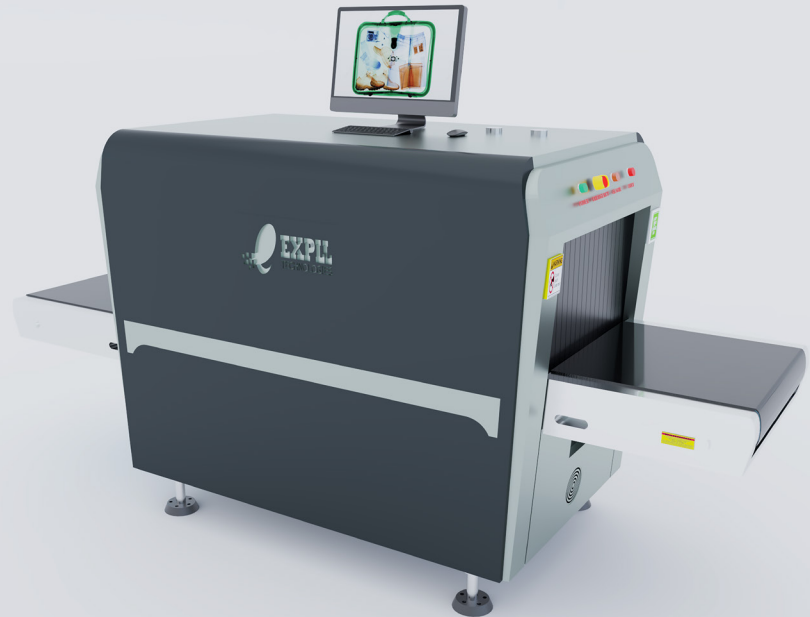
**GOVERNMENTAL  
BUILDINGS AND  
COURTHOUSES**



**BANKS AND  
HOTEL COMPLEXES**



**CRUISE SHIPS AND  
CRITICAL  
INFRASTRUCTURE**



## SMALL MAIL PACKAGE X-RAY SCANNER MACHINE

**ETSCAN-6040** is an Small mail packages of hand luggage and baggage.

With tunnel dimensions of 606 x 405 (mm)/23.9" x 15.9" (in.) it is ideal for screening hand luggage and baggage at airports, railway stations, customs posts, ports, etc. Along with unmatched ergonomics, reliability and safety X-ray inspection machines **ETSCAN-6040** provide excellent image quality and improved material classification. X-ray inspection machine **ETSCAN-6040** has the function of automatic detection of explosives and drugst

## OVERVIEW:

- Radiation safe
- High resolution, high penetration and good image quality
- Multilingual operation
- Automatic built in test and self diagnosis
- Threat alert and material classification
- Energy saving design
- One key turn off with patent
- Drugs and explosives detection
- Sens-Tech detection board and Hamamatsu detectort

## KEY FEATURES

### COMPUTER AND OTHER

Monitor	One 17" in. LCD monitors, 1280 x 1024
Console	No
CPU	Intel (R) i3 (R) 3.3GHz
RAM	4GB
Hard Disk	2TB
Keyboard	Special design
Platform	Windows® 10
Backup	Uninterrupted Power Supply (UPS)
Electric Roller	Three-phase
UPS	Options: 15mins, 30mins, 60mins etc



## TECHNICAL SPECIFICATIONS

PHYSICAL SPECIFICATIONS		IMAGING SYSTEM	
Tunnel Size	606 x 405 (mm)/23.9" x 15.9" (in.)	Detector	1152 channels in an L-Shaped Array
Unit Weight	455 kg/1003.1 lbs	Image Processing	Color / black and white imaging, local enhancement, high penetration, low penetration, super enhancement, organic stripping, inorganic stripping, reverse color, brightening, darkening, gray level change/variable contrast, continuously zoom maximum 64x, pseudo color imaging, organics enhancement, suspicious item alarm and notation, edge enhancement imaging, etc.
Unit Size (LxWxH)	79" x 33.7" x 48.9" (in.)/ 2007 x 855 x1243 (mm)		
Gross Weight	1102.31lbs/500 kg		
Packing Size	#1: 86.6"x 39.8" x 61.4" (in.)/550 x 101 x 156 (cm) #2: 33.9" x 33.9" x 55.9" (i n.)/86 x 86 x 142 (cm) #3: 26.4" x 30.3" x 4.7" (in.)/67 x 77 x 12 (cm)		
GENERAL SPECIFICATIONS		Suspicious Alarm	Alarm and box line the suspicious objects including hard to penetrate material, explosives and drugs
Conveyor Speed	0.22 m/s forward or backward		
Conveyor Height	668 mm / 26.3" in.	Threat Image Projection (TIP)	Inserting fictional, but realistic images of threat items into baggage during screening operation, for maintenance of vigilance, as well as training and assessment of image identification capability
Conveyor Capacity	150 kg / 330.7 lbs		
Frame Design	304 stainless steel, 2-5 mm cold rolled plate and square steel, double-layer staggered lead impregnated safety curtain	Image Recall	30 recallable images
X-Ray Dose/Inspection	≤2.5μSv	Image Archive	Up to 50,000 images stored automatically, enable transferring to USB disk, and converting to JPG, BMP and other formats
X-Ray Leakage	≤1μSv/h at any point 5 cm outside the external surface. FDA standard is ≤5μSv/h	Miscellaneous Functions	Time/date display, counters, user management, systemon/x-ray-on timers, power on self test, built-in diagnosticfacilities, bi-directional scanning, forced scanning, image search and export, system setting, system log, system standby and stimulant training,etc.
Steel Penetration	30mm / 1.2" in. guaranteed		
Wire Resolution	AWG40 guaranteed	Options	Intelligent roller, remote work station, network integration, video monitoring, face recognition and baggage integration, recheck station, additional roller table, etc.
Penetration Resolution	AWG32 guaranteed		
Spatial Resolution:	1.0 mm Horizontal, 1.0 mm Vertical		
Power Consumption	Max. 0.8KW		
Noise	<60 dB		
Film Safety	Guarantee ASA/ISO1600 Film		
X-RAY GENERATOR (SINGLE)			
Anode Voltage	140 KV		
Ray Direction	Upward		
Cooling / Duty Cycle	Sealed oil cooling /100%		
OPERATING ENVIRONMENT			
Operation Temperature/ Humidity	5°C to 40°C (41°F to 104°F)/0% -90%(non-condensing)		
Storage Temperature/ Humidity	-20°C to 60°C (-4°F to 140°F)/ 10%-90% (non-condensing)		
Operation Power	220V(+10% ~ -15%) 50±3Hz Options: 100-130V, 200-250V, 60Hz		
COMPLIANCE			
International	· ISO19001; ISO14001; OHSMS18001; · CE RoHS · FDA FCC		

# ETSCAN-6040



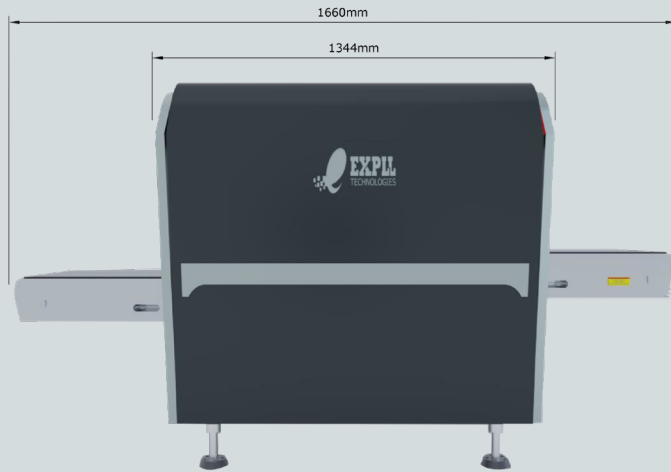
## MODELS AVAILABLE

MODEL	STEEL PENETRATION	X-Ray Generator
ETSCAN-6040	32mm	140kv
ETSCAN-6040P	38mm	160kv

## DIMENSIONS



FRONT



LEFT SIDE

## OPTIONS



DUAL MONITOR OPERATOR STAND



AIRPORT SECURITY SCANNER CONVEYOR TRAYS



SINGEL MONITOR OPERATOR



OPERATOR DESK



TOUCH SCREEN OPERATOR STATION



ROLLER TABLES IN DIFFERENT LENGTHS

### CONTACTS



30 N Gould St Ste 29263 Sheridan,  
WY 82801 USA  
+1 (253) 340-5865  
info@expll.com  
www.expll.com