

ETSCAN-6550D



**BORDER CROSSINGS
AND TRANSPORTATION
FACILITIES**



**SECURITY CHECKPOINTS
AND CORRECTIONAL
FACILITIES**



**GOVERNMENTAL
BUILDINGS AND
COURTHOUSES**



**BANKS AND
HOTEL COMPLEXES**



**CRUISE SHIPS AND
CRITICAL
INFRASTRUCTURE**



SMALL PARCEL X-RAY DUAL VIEW TWO GENERATOR

ETSCAN-6550D is an advanced dual-energy X-ray inspection of hand luggage, baggage. Being equipping with two X-ray generators it provides a viewing of the checked object in two projections. With tunnel dimensions of 25.98"x19.72" (in) 660 x 501 mm it is ideal for inspection of hand luggage, baggage and cargo at airports, railway stations, customs posts, ports, etc.

KEY FEATURES

- Dual view technology with images from two angles
- Radiation safe
- Sens-Tech detection board and Hamamatsu detector
- High resolution, high penetration and good image quality
- High load-bearing capacity
- Multilingual operation
- Automatic built in test and self diagnosis
- Secure access key
- Threat alert and material classification
- Auto archiving
- Energy saving design
- One key turn off with patent
- Drugs and explosives inspection
- Indication of the date and time
- Baggage counter

OPTIONS

COMPUTER AND OTHER

Monitor	Dual 24" LCD Color Monitors, 1280 x 1024; 24 Bit/Pixel Color
Console	A console which can lock the display and keyboard
CPU	Intel (R) i3 (R) 3.3GHz
RAM	4GB
Hard Disk	500 GB HDD, 120 GB SSD · 1GB Video Card
Keyboard	Special designed
Platform	Windows 10
Backup	Uninterrupted Power Supply (Computer Operation - 20 Minute)
Roller	1.0m Entry Roller Table



ETSCAN-6550D



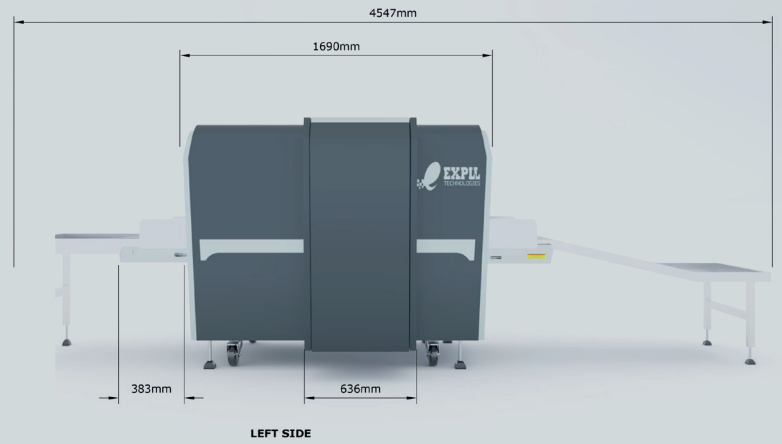
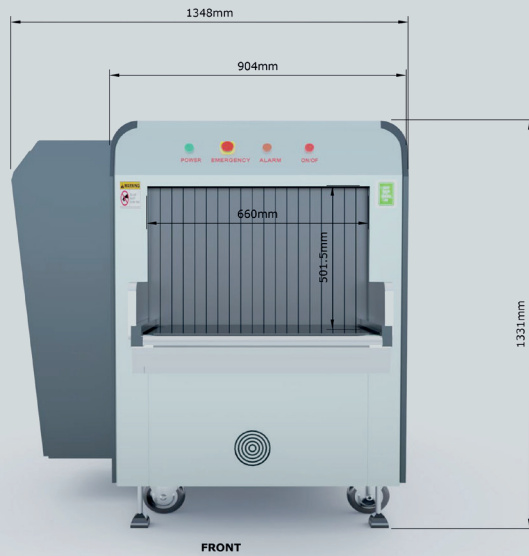
TECHNICAL SPECIFICATIONS

GENERAL SPECIFICATIONS		IMAGING SYSTEM			
Tunnel Size (WxH)	25.98" x 19.72" (in) [660 x 501 (mm)]	Detector	2560 channels in two L-Shaped Arrays		
Unit Weight	1631.42 lbs [740 kg]	Images Processing	Color / black and white imaging, local enhancement, high penetration, low penetration, super enhancement, organic stripping, inorganic stripping, reverse color, brightening, darkening, gray level change/variable contrast, continuously zoom maximum 64x, pseudo color imaging, organics enhancement, suspicious item alarm and notation, edge enhancement imaging, etc.		
Unit Size (LxWxH)	100.24" x 53.07" x 54.4" (in) [2456 x 1348 x 1331(mm)]				
Palletized Gross Weight	1895.98 lbs [860 kg]				
Packing Size	#1: 105.5" x 59.84" x 64.57" (in) [268 x 152 x 164 (cm)] #2: 44.49" x 36.61" x 55.91" (in) [113 x 93 x 142 (cm)] #3: 61.81" x 32.28" x 17.32" (in) [157 x 82 x 44 (cm)]				
Conveyor Speed	23 cm/s (45 ft/min) Forward or Reverse				
Conveyor Height	26.34" (in) [669 mm]				
Conveyor Max Load	363.76 lbs [165 kgs]				
X-Ray Dose Per Each Inspection	≤4.8μSv			Explosives & Narcotics Detection	Suspicious organics highlight (atomic number Zeff=7,8,9)
X-Ray Leakage	<0.1 mR/hr at any point 5 cm outside the external surface. (Leakage less than 0.5 mR/hr permitted by the Federal Standard)			Suspicious Alarm	Alarm and box line the suspicious objects including hard to penetrate material, explosives and drugs
Steel Penetration	34 mm guaranteed			Threat Image Projection (TIP)	Inserting fictional, but realistic images of threat items into baggage during screening operation, for maintenance of vigilance, as well as training and assessment of image identification capability
Wire Resolution	Horizontal AWG38 / Vertical AWG36 guaranteed	Image pullback	30 images		
Penetration Resolution	AWG32 guaranteed	Image Archive	Up to 50,000 images stored automatically, enable transferring to USB disk, and converting to JPG, BMP and other formats		
Spatial Resolution	Horizontal view: 1.3mm Horizontal / Vertical Upward view: 1.0mm Horizontal / Vertical	Miscellaneous Functions	Time/date display, counters, user management, system-on/x-rayon timers, power on self test, built-in diagnostic facilities, bidirectional scanning, forced scanning, image search and export, system setting, system log, system standby and stimulant training, etc.		
Power Consumption	Max. 1KW	Options	Intelligent roller, remote work station, network integration, video monitoring, face recognition and baggage integration, recheck station, additional roller table, etc.		
Noise	<60 dB				
Film Safety	Guarantee ASA/ISO1600 Film				
X-RAY GENERATOR (DUAL)					
Anode Voltage	160 KV				
Ray Direction	Vertical and Horizontal				
Cooling / Duty Cycle	Sealed oil cooling /100%				
OPERATING ENVIRONMENT					
Operation Temperature/	5°C-40°C				
Operating Humidity	0%-90%(non-condensing)				
Storage Temperature	-20°C to 60°C				
Storage Humidity	10%-90%(non-condensing)				
Power	110VAC±10%, 50/60Hz, 20 Amp Max 220VAC ±10%, 50/60Hz, 15 Amp Max				
COMPLIANCE					
International	· ISO19001; ISO14001; OHSMS18001; · CE RoHS · FDA FCC				

ETSCAN-6550D



DIMENSIONS



OPTIONS



DUAL MONITOR OPERATOR STAND



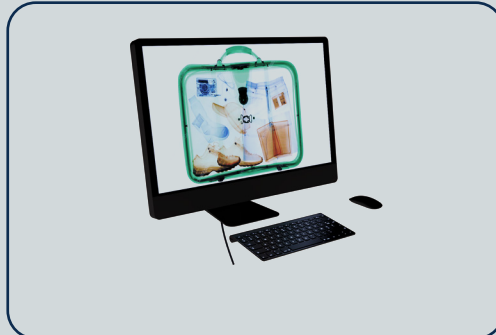
AIRPORT SECURITY SCANNER CONVEYOR TRAYS



SINGEL MONITOR OPERATOR



OPERATOR DESK



TOUCH SCREEN OPERATOR STATION



ROLLER TABLES IN DIFFERENT LENGTHS

CONTACTS



30 N Gould St Ste 29263 Sheridan,
WY 82801 USA
+1 (253) 340-5865
info@expll.com
www.expll.com